

# SPS BOND 2023 PROJECTS REPORT

08.08.2023



# *ADMINISTRATION BUILDING*

## *HVAC AND ROOFING IMPROVEMENTS*

SPS, 505 Architects and Ascend Commercial Builders meet once a week to review construction progress and schedule.

- New TPO roofing system installation was Punched by SPS and 505 Architects on 26 July with Acend working on roof punch list items.
- Main Air Handling Unit (AHU-1) and CU-1 unit installation is nearing completion and start up is anticipated the week of August 7<sup>th</sup>.
- RTU-1 and Board Room mechanical improvements work is anticipated to begin the late August / beginning of September pending delivery of all the remaining mechanical equipment.

# *PROGRESS PHOTOS*



AHU-1 Progress

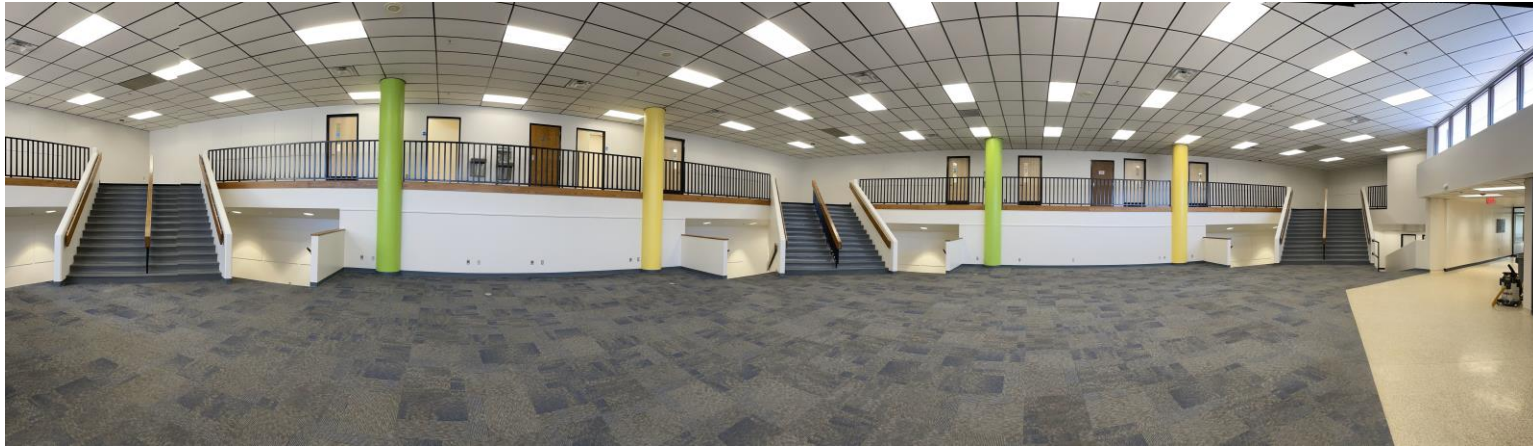


# *SANGRE RIDGE ELEMENTARY CLASSROOM RENOVATION*

SPS, 505 Architects and Ascend Commercial Builders meet once a week to review construction progress and schedule.

- Sangre Ridge Classroom Renovation which focused on safety and security classroom improvements and removal of the portable classroom achieved Substantial Completion on 28 July.
- Ascend is working to address outstanding Punch List items.
- Technology and Furniture installation by SPS has begun.

# *SANGRE RIDGE PROGRESS PHOTOS*



VIEW OF COMMON ROOM 101

# *SANGRE RIDGE PROGRESS PHOTOS*



VIEW OF RENOVATED CLASSROOM

# *SANGRE RIDGE PROGRESS PHOTOS*



VIEW OF RENOVATED STEAM ROOM (ART ROOM)

# *MIDDLE SCHOOL*

# *PLAYGROUND IMPROVEMENTS*

SPS, 505 Architects and Ascend Commercial Builders meet once a week to review construction progress and schedule.

- Remaining new playground concrete installation continues as weather permits.
- Turf installation is scheduled the first of August.
- Playground equipment is on site and installation is ongoing.
- Shade structure is ordered and is anticipated to be installed after start of the school year.
- Project schedule has shifted with Substantial Completion the end of August



# *MIDDLE SCHOOL PROGRESS PHOTOS*



AMPHITHEATER SEATING AND PLATFORM

# MIDDLE SCHOOL PROGRESS PHOTOS



RETAINING WALL AT NEW PLAY AREA



NINE SQUARE AND OUTDOOR RECREATIONAL AREA

# HS PHASE 1

A major milestone was achieved this month with completion of the HS Phase 1 Schematic Design (SD) Package.

- 505 Architects submitted the Schematic Design Package to the Construction Manager CMS Willowbrook on 7 August for them to bring their SD preliminary cost estimate.
- Geotechnical Investigation Report draft was received by the A/E Team on 2 August. Majority of borings were drilled to approximately 30 feet below surface elevation and were terminated in rock with the exception of two borings at 5 feet and 60 feet.
- Traffic Study scheduled for fall 2023.
- Schematic Design Review meetings with KUG, DRC, and the BOE are being scheduled for the week of August 28<sup>th</sup>.



STILLWATER PUBLIC SCHOOLS

